

## First Description of the Male of *Astenus shibatai* T. ITO (Coleoptera, Staphylinidae)

Tateo ITO

E12-102, Otokoyama Yutoku 7, Yawata, Kyoto, 614-8371 Japan

**Abstract** The male of *Astenus shibatai* T. ITO is described for the first time on specimens from three major islands of the Ryukyu Archipelago.

*Astenus shibatai* is easily discriminated from all the known congeners from Japan by the apicalmost segment of antennae extremely large as well as robust. It was described by the present author in 1995 from Kagoshima and Okinawa Prefectures on the females only. I am going to describe its male in this paper, which is dedicated to the memory of the late Dr. Masataka SATÔ.

Before going into further details, I would like to express my cordial thanks to all the persons whose names are given under the “specimens examined.”



Fig. 1. *Astenus shibatai* T. ITO.

*Astenus shibatai* T. ITO

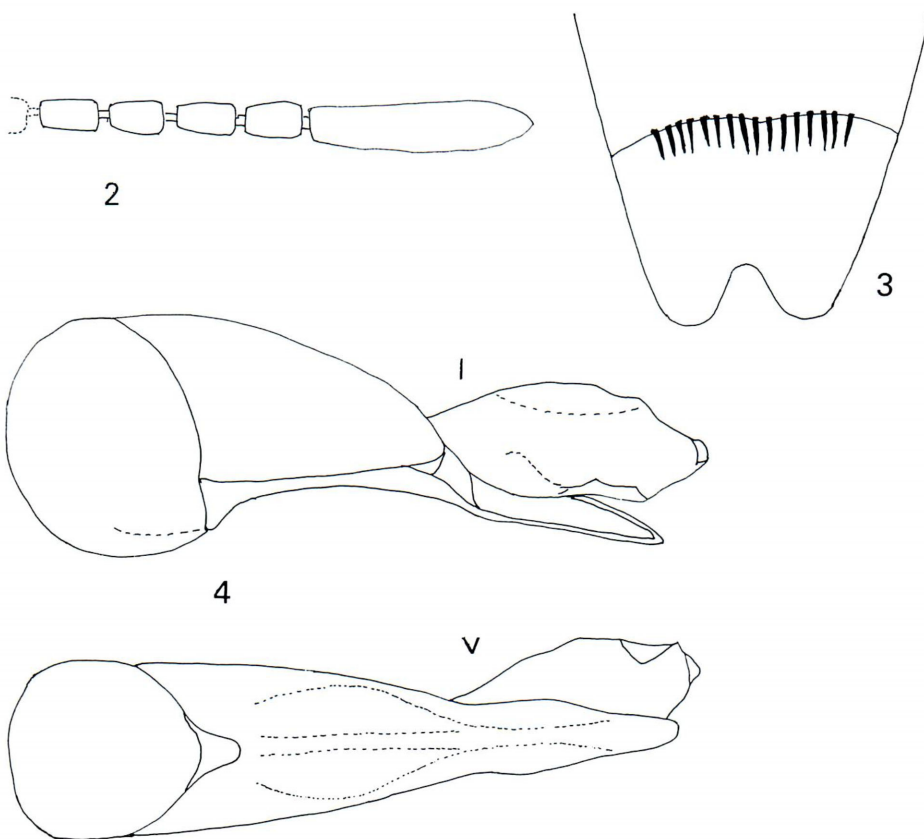
(Figs. 1-4)

*Astenus shibatai* T. ITO, 1995, Ent. Rev. Japan, 50: 30.

Male. Similar to female in general appearance; each apicalmost segment of antenna very large and more than three times as long as the preceding one (Fig. 2).

In the male, 7th and 8th sternites of abdomen impunctate and with a scratch-like microsculpture on all surface; apical margin of the former sternite bisinuate, very weakly projecting in the middle, and armed with stout spines 15 or 16 in number along its edge; apical margin of the latter sternite strongly excised and very weakly depressed in front of the excision (Fig. 3).

Aedeagus moderately sclerotized except for dorsal side, with a ventral projection lanceolate in shape, weakly and narrowly depressed along middle, narrowed near apex



Figs. 2-4. *Astenus shibatai* T. ITO. — 2. Apical five segments of antenna. — 3. Outlines of 7th and 8th sternites in male. — 4. Aedeagus; l, lateral view; v, ventral view.

and at about apical third, gradually expanded towards base except for constrictions near apex and apical third, the tip of ventral projection dull, not pointed (Fig. 4).

*Additional specimens examined.* 1♀, Maruhata, Amami Is., Kagoshima Pref., 19-IV-1995, I. MATOBA leg.; 1♂, Manse-path, Ishigaki Is., Okinawa Pref., 9-IV-1998, S. TSUYUKI leg.; 1♂, Manse, Ishigaki Is., Okinawa Pref., 22-IX-1993, K. ITO leg.; 3♂♂, Itona, Ishigaki-jima Is., Okinawa Pref., 29-XI-1998, T. ISHIKAWA leg.; 1♂, 1♀, Aira-gawa, Iriomote-jima Is., Okinawa Pref., 6-V-1999, T. SHIMADA leg.; 2♂♂, Aira-gawa, Iriomote-jima Is., Okinawa Pref., 6-V-1999, T. MIZUSAWA leg.

*Distribution.* Amami Is.\*, Kagoshima Pref.; Tokunoshima Is., Kagoshima Pref.; Ishigaki Is.\*, Okinawa Pref.; Iriomote Is., Okinawa Pref. \* New record.

## 要 約

伊藤建夫：ヒゲノシリグロハネカクシ（新称）雄の記載。—— *Astenus shibatai* T. ITO は雌のみで記載されていた。ここに雄の記載と新産地の記録をおこない、あわせて和名を新称する。この小文は、昨年の夏に逝去された佐藤正孝博士に捧げるものである。

## References

- ITO, T., 1995. Notes on the species of Staphylinidae from Japan, VII. Descriptions of two new species of the genus *Astenus* DEJEAN. *Ent. Rev. Japan*, **50**: 27-35.
- SHARP, D., 1874. The Staphylinidae of Japan. *Trans. ent. Soc. London*, **1874**: 1-103.